

FROM THE PRESIDENT MICHAEL J. CAGNEY



Hello everyone,
I am sorry to report that Anne Brauer, EREF's vice president of development and communications, will be leaving us in March. I am going to take editorial license with this issue of the newsletter and digress from talking about EREF because I want you to know how deeply I feel about her.

Anne has been a member of the foundation 'family' for more than three years and has made a lasting contribution in more ways than I can count – certainly, she will be missed by all of us and by me in particular.

She is leaving the foundation and moving to Europe to join her husband who works for the German government. I had hoped that he would obtain a posting here in the states and that Anne could then stay with EREF, but that was not to be.

I have known Anne for over five years having met while she was at the Environmental Industry Associations. On a very personal level, I find her to be a person of loyalty, honesty, and conviction. I feel fortunate to have known her and I consider her my friend.

On a professional basis Anne is not just smart, she has vision and knows the strengths and weaknesses of the non-profit sector and is committed to improving the organizations she has worked for. She has a long history of functioning under diverse conditions, satisfying corporate and non-profit stakeholders, and she is passionate and thorough about her work – and through it all she has also maintained a good sense of humor.

She is well versed in fund-raising and applies skills she has acquired in a very effective manner. As a certified fund-raiser myself, I appreciate her abilities. I will certainly miss her at the auction and at golf tournaments.

Anne is a communicator – she has honed her skills through continued consultations with donors, other non-profits, and the public and this talent will be an important influence in the development of her future endeavors.

Finally, Anne is committed to creativity and innovation, she seeks out new ideas and approaches to tough problems.

I know that Anne has impressed many of you and so together let us bid her farewell, Godspeed, and good fortune for her future.

Goodbye Annie!

EXCEPTIONAL GOLF AND LOADS OF FUN DOMINATE OCTOBER TOURNAMENT



(From left) Paul Withrow, Richard Moro, Mark Rome, Tom Van Weelden (event host), Robert Boucher, Michael Cagney (EREF). Winning first place was the team of Paul, Richard, Mark and Robert.

EREF's Desert Open golf tournament was held on Monday, October 27 at the Tournament Players Club in Scottsdale, Arizona, home of the Phoenix Open. Tom Van Weelden, Chairman and CEO of Allied Waste Industries, was generous in hosting the event.

Continued on page 2

Time's running out!
Get your tickets today for this awesome car – only \$100 each.

See page 7



SEE! BID! OWN!

Join us at WasteExpo in Dallas for our most exciting fundraising events of the year!

- Refuse Equipment Absolute Auction
- Charity Raffle • Silent Auction
- High School Art Contest

See page 7

INSIDE THIS ISSUE...

EREF Desert Open Golf1, 2, 3
Calendar3
Board Elections4, 5
Memorials and Honorariums5
Industry Research and Education6
2004 Auction and Raffle7

HIGHLIGHTS FROM THE



Winning first prize was the Synagro team of (left to right) Richard Moro, Paul Withrow, Bob Boucher and Mark Rome. Their winning score was 58; course par was 71. Each team member received a \$750 "The Golf Warehouse" (TGW.com) gift certificate and a driver (compliments of Allied Waste Industries).



Taking home second place and engraved Krystof commemoratives was the team of David Sutherland-Yost, Neil Moore, Chauncy Durkin and Kurt Wahl. Their score was 61. ((Left to right) Michael Cagney (EREF), David, Neil, Chauncy, Kurt, Tom Van Weelden (Allied Waste Industries)).



Robert Johnson (left) accepts his \$250 TPC gift certificate.



Mark Clindaniel (center) goes home a tournament raffle winner AGAIN with this handmade Coyote collectible!



Participants enjoyed a BBQ lunch at the TPC.



Dave Call (flanked by Michael Cagney (left) and Tom Van Weelden) couldn't wait to go shopping with his \$500 gift certificate!



Rich Moro (center) accepts his Closest to the Pin prize from Michael Cagney (left) and Tom Van Weelden.

DESERT OPEN

During the awards reception, a raffle was held for gift certificates to the TPC Pro Shop (winners were Dave Call \$500 and Robert Johnson \$250) and a handmade collectible Howlin' Coyote called Chato (winner Mark Clindaniel).

Hole-in-one prizes offered during the tournament were a 2003 Chevrolet Corvette Coupe and three exceptional golf vacation packages for two—many shots were close, but unfortunately there were no winners.

Prizes were also awarded for the Longest Drive on Hole #18 (winner Don Swierenga) and Closest to the Pin on Hole #7 (winner Richard Moro).

The EREF board of directors is very grateful for the generous concern of **Tom Van Weelden, Chairman and Chief Executive Officer of Allied Waste Industries** without whose assistance this tournament would not have been possible.

EREF WISHES TO THANK ALL PARTICIPATING GOLFERS AND RECOGNIZES THE FOLLOWING COMPANIES AND INDIVIDUALS FOR THEIR SPONSORSHIPS AND SUPPORT OF THE DESERT OPEN:

TOURNAMENT SPONSOR:

Allied Waste Industries, Inc.

AWARDS RECEPTION SPONSOR:

Republic Services, Inc.

LUNCH SPONSOR:

Fred Barbara Investments

BEVERAGE CARTS SPONSOR:

Capital Environmental

WELCOME RECEPTION SPONSOR:

Heil Environmental

WELCOME RECEPTION BAR SPONSORS:

Jim and Jeff Cosman
Onyx, NA

HOLE-IN-ONE INSURANCE AND AUTOMOBILE PROVIDED BY:

Van Chevrolet of Scottsdale, courtesy of Craig Darling, Fleet and Commercial Sales Director

TOTE BAGS COURTESY OF:

RJM Waste Equipment Company

GOLF GLOVES COURTESY OF:

WasteExpo

GOLF BALLS COURTESY OF:

McNeilus Trucks

HATS, TEES AND DIVOT REPAIR KITS COURTESY OF:

Heil Environmental

TOWELS COURTESY OF:

Federal Signal Corporation

DONATIONS TO HELP DEFRAY THE COST OF SHIRTS:

Allison Transmission
Rehrig Pacific

HOLE SPONSORS:

Arvin Meritor
Autocar Trucks
Big Truck Rental
Castrol
Caterpillar, Inc.
Comanco Environmental
Jim and Jeff Cosman
Galbreath, Inc.
Hytec International
LaBrie Equipment, Ltd.
Mack Trucks
McNeilus Trucks
Nextel
O'Brian Manufacturing Company
Pioneer Cover-All
Waste Corporation of America
Wastequip
Waste Logistics, Inc.

PHOTOGRAPHS:

Ron McCracken, RJM Waste Equipment Company

EREF CALENDAR

EREF GENERAL BOARD MEETING

April 26-27, 2004

Alexandria, VA.

10TH ANNUAL REFUSE EQUIPMENT AUCTION AND CHARITY RAFFLE

May 19, 2004

(Silent Auction May 17-19)

WasteExpo, Dallas, Tex., EREF Exhibit Space

2004 GOLF TOURNAMENTS

Locations and Venues TBD

Updates on EREF's Website - www.erefndn.org

EREF GENERAL BOARD MEETING

August 19-20, 2004

Location - TBD

EREF ANNUAL BOARD MEETING

December 9-10, 2004

Alexandria, Va.



Liz Leith (EREF Accountant) holds up a toy during her baby luncheon - she has since had a girl, Juliana Rae, weighing 8 lbs. 6oz.

Event and hole sponsors are needed for this year's golf tournaments - includes special mention in all marketing materials and the official program. Call 703-299-5139 x10 today!

FROM THE EREF CHAIRMAN**ROBERT P. STEARNS P.E., DEE**

I am honored to have been selected by my colleagues to serve as Chairman of the foundation this year. One of the reasons I accepted the chairmanship is the growing impact this independent nonprofit

organization is having on municipal solid waste management practices, and on our own communities.

The foundation is unique, in that it is the only independent non-profit foundation in the U.S. committed to the support of research and education to improve municipal solid waste management practices. Improvements resulting from the various technical projects, educational activities, and from the work of recipients of scholarships supported by the foundation benefit the living standards of all mankind and protect our environment.

The foundation's website (www.erefndn.org) provides a wealth of information on the worthwhile research projects and scholarships wholly supported by voluntary contributions to the foundation. Annually, new research proposals are solicited, evaluated, and funded based on merit and availability of funding. Currently, four doctoral or post-doctoral scholarships are being supported. Among the projects funded by the foundation are several that address various aspects of bioreactor landfill technology and operation. Bioreactor technology offers the promise of reducing the potential for adverse environmental impacts of waste landfills while lowering long-term costs.

More research work needs to be completed, but the foundation is limited by the availability of funds to support many worthwhile projects. Funding for our work comes from a variety of sources including private contributions (tax deductible), the annual Equipment Auction held at WasteExpo, and golf tournaments supported by leading waste service companies. This year, special emphasis is being placed on private contributions recognized through participation in the Eagle Club. Participants in the Eagle Club program commit to annual contributions over a multi-year period. Details on this convenient way to contribute are available on the foundation's website (<http://www.erefndn.org/annualgivingeagleclub.html>). Also, the foundation hopes to gain access to additional funding through a cooperative research project with the U.S. Environmental Protection Agency and through partnerships with other environmental and non-profit organizations.

I look forward to a productive year for the foundation and welcome your input and especially your financial support for our work.

BOARD ELECTIONS**FROM THE CHAIRMAN OF THE NOMINATING COMMITTEE****LONNIE C. POOLE, JR.**

No work is more important for the Board of Directors of the Environmental Research and

Education Foundation than securing the very best talent available to provide the vision, leadership, and resources to accomplish our goals.

We are pleased to announce the election of Mark D. Weber, President, Environmental Products Group of Federal Signal Corporation (Elgin, Ill.) to Director, and the re-election of Frederick E. Leach, Paul R. Mitchener, Charles E. Williams and Thomas Van Weelden, with terms to expire on December 31, 2006.

We would also like to congratulate our 2004 officers—Chairman Robert P. Stearns, P.E., DEE; Vice-Chairman Kevin Walbridge; and Secretary-Treasurer Paul R. Mitchener—and thank Deborah C. Hockman, Ph.D. for her 2003 chairmanship.

DIRECTOR**MARK D. WEBER**

Mark was appointed President, Environmental Products Group (Elgin, Ill.) for Federal Signal Corporation in April of 2003. Federal Signal Corporation's Environmental Products Group provides technology and processes to meet customer

expectations for cleaner living, working and recreational areas. This includes the manufacturing and worldwide marketing of a full range of street and parking lot sweeping, industrial vacuuming, municipal catch basin/sewer cleaning vehicles, refuse hauling truck bodies and high performance waterblasting equipment.

His previous positions with Federal Signal included Vice President & General Manager, Sweeper Products and Vice President, Operations at Elgin Sweeper Division. Prior to joining Federal Signal, he spent seventeen years with Cummins Engine Company in a variety of management positions.

Mark holds an Executive MBA degree from Indiana University and a B.S. in Mechanical Engineering from the Rose Hulman Institute of Technology.

His election to the EREF board is for a three-year term.

Welcome Mark!

2004 OFFICERS



**ROBERT P.
STEARNS, P.E.,
DEE
CHAIRMAN**

Bob has been an EREF Board member since 1999; he served as Vice-Chairman in 2003 and as Secretary-Treasurer in 2001-2002. His election to Chairman is for a one-year term.

Bob was a co-founder of SCS Engineers in 1970 and has served as the firm's Chairman since 2003. SCS Engineers, founded in 1970 and headquartered in Long Beach, Calif., has been providing a wide range of environmental services to the public and private sectors since 1970. Their primary areas of practice include solid waste and hazardous waste management, remediation, landfills, recycling, and environmental assessments.

Bob is a diplomat of the American Academy of Environmental Engineers and former president of the American Society of Civil Engineers (ASCE) Los Angeles Section. He has also served as a board and committee member of the Solid Waste Association of North America (SWANA) and the National Solid Wastes Management Association (NSWMA). In 2003, Bob was inducted into the Environmental Industry Associations' Hall of Fame.

Bob is a graduate of the University of Iowa, receiving a B.S. in Civil Engineering and an M.S. in Engineering Management from the University of California at Los Angeles. He is a registered professional engineer in the states of California, Virginia and Ohio.



**KEVIN
WALBRIDGE
VICE-
CHAIRMAN**

Kevin has been an EREF Board member since 2002; he served as Secretary-

Treasurer in 2003. His election to Vice-Chairman is for a one-year term.

He joined Republic Services, Inc. in June 1997, serving as Regional Vice President - Central Region (Indianapolis, Ind.). Republic Services, Inc. (headquartered in Ft. Lauderdale, Fla.) is a leading provider of collection, transfer, recycling

and disposal services to commercial, industrial and residential customers in 22 states throughout the U.S.

Kevin is currently a member of the National Solid Wastes Management Association's (NSWMA) Executive Committee (Washington, D.C.), and serves on the board of Ball State University Business School (Muncie, Ind.) and the Detachable Container Association (Keswick, Va.). Past positions have included vice president of operations National Serv-All (Fort Wayne, Ind.; 1996), president, Waste Management of Alameda County (Oakland, Calif.; 1993-1996), and division president, Empire Waste Management (Santa Rosa, Calif.; 1988-1993).

He graduated from Ball State University in 1982, receiving degrees in Business and Natural Resources.

PAUL R. MITCHENER SECRETARY-TREASURER



Paul has been a member of EREF's Board since 2003. His election to Secretary-Treasurer is for a one-year term.

He joined Energy Developments Inc. as

President in September 2002. His previous positions included Director and General Manager of Swire SITA Waste Services, Ltd., Hong Kong, China (Aug. 2000-Sept. 2002); Vice President Technical and Research, SITA Group, Paris, France (June 1998-Aug. 2000); Vice President Technical Development, BFI International Inc., Houston, Tex. (Jan. 1994-June 1998); Market Development Manager, Swire BFI, Hong Kong, BT (July 1991-Jan. 1994); Director of Market Development, BFI Wastecare, London, England (Mar. 1989-July 1991); and Group Manager Solid Waste, ERM Consultants, London, England (Feb. 1985-Mar. 1989).

Paul holds an Honours Degree in Environmental Science from the University of Plymouth (United Kingdom) and is a member of the Chartered Institute of Waste Management (United Kingdom) and the Chartered Institution of Water and Environmental Management (United Kingdom).

MEMORIALS AND HONORARIUMS

IN MEMORY OF:

Sandy Brunton- Malmquist

(Assistant to Jim O'Connor)

Michael J. Cagney

Bob Hickman

(A very special friend of the
Bob Duncan Family)

Jan Duncan

Josephine Marhefka

Michael J. Cagney

Salomon Munoz

(Father of Carlos A. Munoz)

Michael J. Cagney

Dr. Fred Pohland and his contributions to municipal solid waste research

Dr. Morton Barlaz

Sarah Ross

(Beloved mother of
David E. Ross)

Robert P. Stearns

Marilyn Carr Saieed

(Tom Saieed's wife)

Michael J. Cagney

IN HONOR OF:

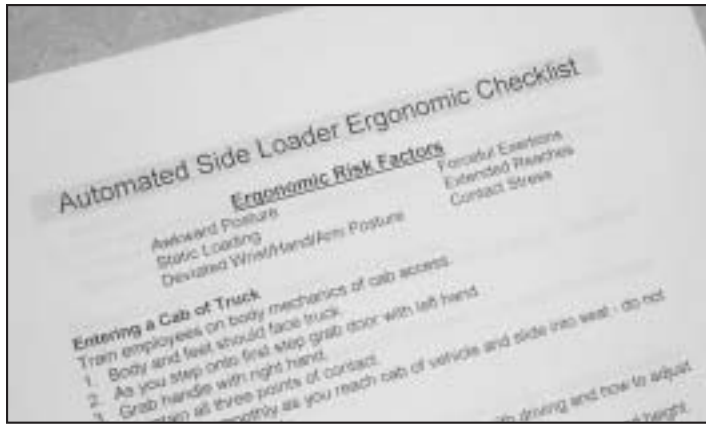
Bets made (and unfortunately lost AGAIN!) on the Packers/Bears games

Doris Kutchera

The next due date for mention
of your Honorariums or
Memorials in our fall issue is
September 1, 2004.

Call 703-299-5139 x10 for a
donor form or download at
www.erefndn.org/donor.pdf.

CONGRATULATIONS 2004 OFFICERS



ERGONOMICS

In January the U.S. Occupational Safety and Health Administration (OSHA) approved EREF's checklists of ergonomics issues for solid waste employers and employees to use as part of their overall safety programs and training.

The checklists, currently available in English, can be downloaded free of charge from the foundation's website - www.erefnd.org (click on the homepage link "Seminars and Solid Waste Employee Training Programs"). A Spanish version will be available online in summer 2004.

Got questions or concerns about ergonomic hazards in the workplace? Go to "Post An Inquiry" at www.envasns.org/ergonomics/index.htm for timely answers to your questions.

LANDFILL LEACHATE RECIRCULATION PROJECT APPROVED

At its Annual Meeting on December 11, the EREF Board approved funding of \$41,351 to Michigan State University (E. Lansing, Mich.) to conduct leachate recirculation trials of various recirculation blankets of a bioreactor landfill. The blankets to be tested are made up of (1) crushed glass, (2) shredded tires, and (3) a geocomposite drainage layer.

Recirculation blankets are a new design concept that offers economic and operational benefits to conventional leachate recirculation methods that are currently used for bioreactor landfills. Project results are expected in first quarter 2005.

QUARTERLY RESEARCH BULLETINS

"Microbial Communities in Landfill Gas and Condensate" was the subject of the Winter 2004 Research Bulletin. This study on microbiological communities in landfill gas has the potential to allow landfill owners and operators an alternate method to determine the rate of waste degradation in a landfill without obtaining waste samples. The study also provides owners and operators with information necessary for optimal site management especially if bioreactor operations are undertaken.

Research Bulletins are downloadable at www.erefnd.org/news.html.

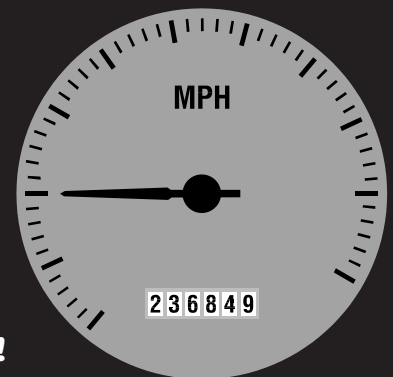
ANNUAL MEETING OF THE BOARD 2003

EREF's Annual Meeting of the Board was held December 10-11, 2003 in Alexandria, Virginia. Meetings were held for Director and Officer Nominations, Finance, Development, 2004 Operating Plan, and Projects.



Deborah Hockman, Ph.D. received an engraved Kristof dish for her 2003 chairmanship

GET A LITTLE EXTRA MILEAGE FROM YOUR USED VEHICLES!



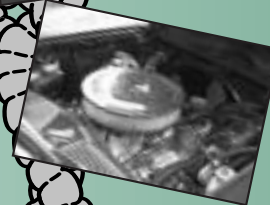
When you get ready to donate that used vehicle, think of us...your used car or truck can help fund environmental solutions for the future. The value of your donation is tax deductible and we take care of everything - appraisal, towing, etc.

Call today - 703-299-5139 x10.

RAFFLE

Here's an investment windfall waiting to be owned by you! Get your tickets TODAY for a chance to win this striking '65 Corvette Stingray!

ONLY 600 TICKETS ARE BEING SOLD AT \$100 EACH (LIMIT OF 10 PER PERSON).



- numbers matching 327/300 hp small block
- Edelbrock headers
- electronic ignition
- full power - steering, brakes and windows
- powerglide transmission
- telescopic steering column
- factory air - blows COLD air!
- leather seats
- Michelin tires on knock-off rims
- original AM-FM radio
- lots of chrome
- for the purist, all original equipment is included!

Curious about the current asking price for a vintage 1965 Stingray?

Go to Hemmings Motor News (www.hemmings.com) and run the comps - you'll be amazed at the value of a car like this!



RAFFLE DRAWING

Wednesday, May 19

WasteExpo '04, Dallas Convention Center, Dallas, Texas

EREF Exhibit Space

Following the Refuse Equipment Absolute Auction (starts 5:00 p.m.)

Color photos available at www.erefdn.org. Drop by EREF's exhibit space any time at WasteExpo to see this beautiful car (winner need not be present, but must arrange for removal of the car from EREF's booth by noon Thursday, May 20).

Dear EREF,

This is my year to win your fantastic prize - a '65 Corvette Stingray! Please process ____ ticket(s) for me for the 2004 Charity Raffle. Enclosed is my payment (checks to be drawn on a U.S. bank) for \$_____ to cover ____ ticket(s) (limit of 10 tickets per person, \$100 per ticket).

I'll see you at WasteExpo in Dallas on Wednesday, May 19!

NAME _____

ADDRESS _____

CITY _____

STATE _____

ZIP _____

TELEPHONE _____

FAX OR EMAIL _____

CREDIT CARD _____

___ VISA

___ MASTERCARD

___ DISCOVER

___ AMEX

EXP. DATE _____

CARD NO. _____

SIGNATURE _____

LOCATOR CODE (see signature line on back of card) _____

BILLING ADDRESS _____

DONORS WHO HAVE MADE SUBSTANTIAL FINANCIAL COMMITMENTS AS OF APRIL 1, 2004

CHAIRMAN'S CIRCLE CLUB (donations of \$250,000 or more)

Dean L. and Rosemarie Buntrock Foundation
Environmental Industry Associations
Heil Environmental, Inc.**
Leach Company**
Mack Trucks, Inc.**
Marathon Equipment Company**
McClain/E-Z Pack**
McNeilus Truck and Mfg. Company**
Donald F. Moorehead, Jr. Primedia**
Ritchie Bros. Auctioneers**
SITA
Volvo Truck North America**
Waste Management, Inc.
U.S. Department of Energy

PLATINUM CLUB (donations of \$100,000 to \$249,999)

Lawrence Beck
Tom Bowen

Andy Crawford
Robert C. Duncan*
George W. Fennell
Harris W. Hudson
Dwight Schaubach
Waste Industries, Inc.**

GOLD CLUB (donations of \$50,000 to \$99,999)

Norm Aardema
Allied Waste Industries**
Joseph Anstett
Ave Maria Carite
Centres de Recherches et d'Essais
Charles Cattaneo*
DaimlerChrysler Corporation
EDCO Disposal Corporation
Energy Developments
Groot Industries, Inc.
H. Wayne Huizenga
William P. Hulligan
David Hyman
International Baler, Inc.**
Joyce Engineering, Inc.
George O. Moorehead

Perkins Manufacturing Co.**
Philadelphia Tramrail, Inc.
Bruce Ranck
Republic Services, Inc.**
Resource Management Companies
RJM Waste Equipment Company**
Harold Rubenstein
W. Tom Sawyer, Jr.
SP Industries, Inc.**
Robert P. Stearns, P.E., DEE

SILVER CLUB (donations of \$25,000 to \$49,999)

Patrick Banfield
General Purpose Steel**
Homewood/Nu-Way Disposal Svc. Inc.
J.V. Manufacturing Co.**
Ronald McCracken
Palo Alto Sanitation Co.
Toter, Inc.**
Walbridge Family
Eugene Wingarter
Zarn, Inc.**

STERLING CLUB (donations of \$5,000 to \$24,999)

Izzie Abrams
ALCOA Wheel & Forged Products**
Ameri-Kan**
Bayne Thinline Premium Lift Systems**
Galbreath, Inc.**
General Waste, Inc.
Goodyear**
Harris Waste Management Group, Inc.**
IESI
K-PAC Division, Krause Corp.**
Nu-Life Environmental, Inc.**
O'Brian Manufacturing Co.**
RDK Truck Sales and Service, Inc.**
Marshall Rabins*
SCS Engineers
Telma, Inc.**
Texas Commerce Bank
Vermeer Manufacturing Company**
Wastequip**
Weaver Boos & Gordon, Inc.

*deceased

**auction donor

ENVIRONMENTAL RESEARCH AND EDUCATION FOUNDATION

Developing environmental solutions for the future.

EREFNEWS

120 S. Fayette Street, Alexandria, Virginia 22314

NON-PROFIT ORG.
U.S. POSTAGE
PAID
MERRIFIELD VA
PERMIT #2446

www.erefdn.org

BOARD OF DIRECTORS

Robert P. Stearns, P.E., DEE
Chairman

Michael J. Cagney
President

Kevin Walbridge
Vice Chairman

Paul R. Mitchener
Secretary-Treasurer

Deborah Hockman, Ph.D.
Leonard E. Joyce, Jr., P.E.
Frederick E. Leach
Ronald J. McCracken
Lonnie C. Poole, Jr.
Debra R. Reinhart, Ph.D., P.E.
Robert J. Riethmiller, Jr.
Thomas Van Weelden
Mark D. Weber
Charles E. Williams

Director Emeritus
Robert C. Duncan*
Ted Flood

*deceased